



SRAPPA

Inc.

Southeastern Regional Association of Physical Plant Administrators

Volume 13, Issue 3 Newsletter Fall 2006

Welcome!

I am pleased to invite you to the 55th Annual SRAPPA Conference and Exhibition Show to be held in Durham, North Carolina October 14-17, 2006. With the theme of "Green Leaders in the Bull City", we expect the 2006 conference to be an opportunity to network, learn, and see new initiatives in practice. We're preparing a program with a focus on cutting-edge technology, personal development, and quality initiatives. Whether you are an attendee or business partner, your participation is critical to the overall success and quality of the conference.

The 2006 conference will be held at the Sheraton Imperial Hotel, located in the Research Triangle Park (RTP). The 331 guest room hotel is conveniently located near Raleigh-Durham International Airport and the cities of Durham, Raleigh, and Chapel Hill. It features a campus-like setting and 31,000 square feet of meeting space. Other amenities include onsite dining facilities, a 3-mile walking trail, free high-speed internet access, and a nearby athletic facility. This ADA-compliant hotel was named Hotel of the Year 2004 by Starwood Hotel and Resorts Worldwide, Inc.

The RTP area is home to many artists and museums, historical landmarks, science and nature facilities, and other options for recreation. The area boasts hundreds of restaurants, shops, and other attractions, all within a short commute from the hotel.

I am excited about our conference and the opportunity to welcome you and your family to North Carolina, to Durham, and to Duke University. I look forward to seeing you in October 2006.

Glenn
Glenn Reynolds
1st Vice President, SRAPPA
Associate Director, Facilities Management

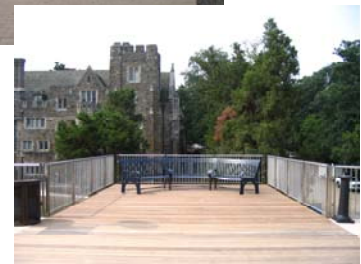
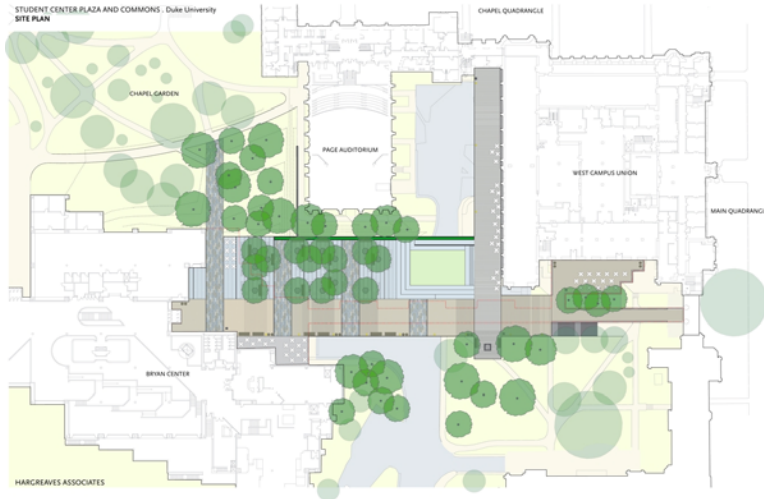
Special Pre-Conference Issue



SRAPPA 2006 October 14-17 at Duke University
<http://www.srappa2006.duke.edu/srappa2006/>

SRAPPA Newsletter

Special Pre-Conference Issue



Duke University's New West Campus Plaza

Construction of the 40,000-square-foot plaza began this summer and is scheduled to be completed by fall 2006. Designed to accommodate various types and sizes of activities, the new plaza will feature both fixed and moveable furniture, a main stage for the arts, as well as performance space, dining areas, and small and large group "gathering nodes."

The new plaza will be used for both student and alumni activities, but its primary function is to provide outdoor space for interaction among members of the Duke community, said Larry Moneta, Duke's vice president for student affairs.

"The West Campus Plaza continues the tradition of support for student life by the McClendon family," Moneta said. "The McClendon Tower provides wonderful 'hang-out' and event space for students. The new plaza will greatly increase the opportunity for students to get together, have fun, socialize and relax with other students, faculty, staff, alumni and community members."

The new West Campus Plaza is envisioned as the "living room" of West Campus, providing gathering, programming and related spaces. Central to this idea of the West Campus "living room," the plaza will connect the complex of buildings which together make up the Student Center: the Bryan Center, West Union, the Flowers and Page, with all of them opening onto the Plaza. The ultimate Student Center plan contains an array of services including major eateries and a host of other functions along the perimeter of the Plaza. Also included is a built-in stage for performances and various reservable spaces. Most significantly, the plaza will exist as a high quality, user-friendly outdoor space in a central location that will add significant value to the student experience at Duke.

To celebrate the opening of the Plaza, the Duke University Union is planning a kick-off month, which will begin during new-student orientation and end with Oktoberfest and Homecoming festivities. Every Day of this kick-off month will include programs.

Note: One section of the plaza features grates that have misters, fog makers and lights in them!

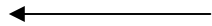
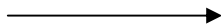
SRAPPA 2006 October 14-17 at Duke University
<http://www.srapa2006.duke.edu/srapa2006/>

SRAPPA Newsletter

Special Pre-Conference Issue



Duke Chapel



Blumquist Gardens



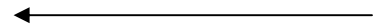
Cameron
Indoor
Stadium
(Home of
Duke
Blue Devils
Basketball!)



Duke's Hall
of Honor



Wilson Recreation
Center



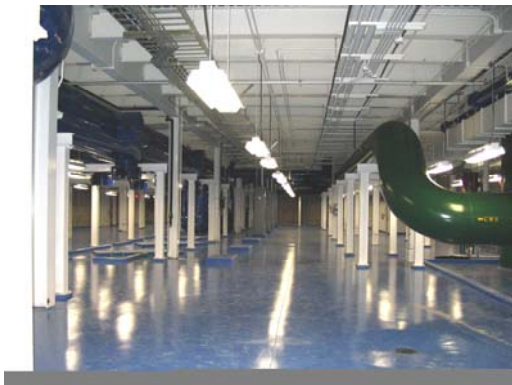
SRAPPA 2006 October 14-17 at Duke University
<http://www.srappa2006.duke.edu/srappa2006/>

SRAPPA Newsletter

Special Pre-Conference Issue



Duke University's New Chiller Plant



SRAPPA 2006 October 14-17 at Duke University
<http://www.srappa2006.duke.edu/srappa2006/>